



Est. 1989

# INDUSTRIES SERVED

---

Oil & Gas



Automotive



Mining



Trucking

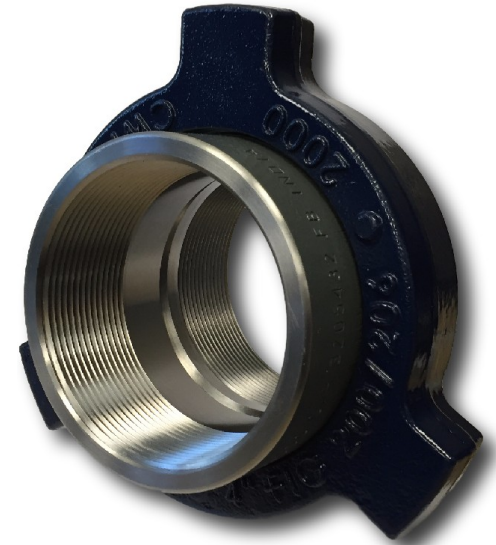


# OIL & GAS



## Flow Components:

- ❖ **Forged Steel Fittings** -  
Elbows (90°/45°), Tees, Crosses for high pressure applications Sizes: 1/8" - 8"
- ❖ **Hammer Union Assemblies** -  
Male/Female/Nut Pressure Ratings:  
Figure 100 - Figure 1502 Sizes: 1" - 6"
  - High Pressure - Steel Forging, Powder Coated, and Machined
  - Low Pressure - Ductile Iron Casting, Powdered Coated, and Machined



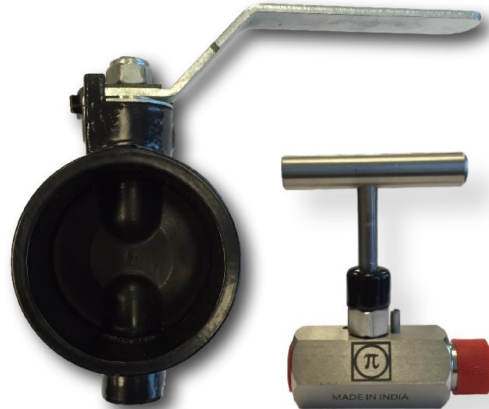
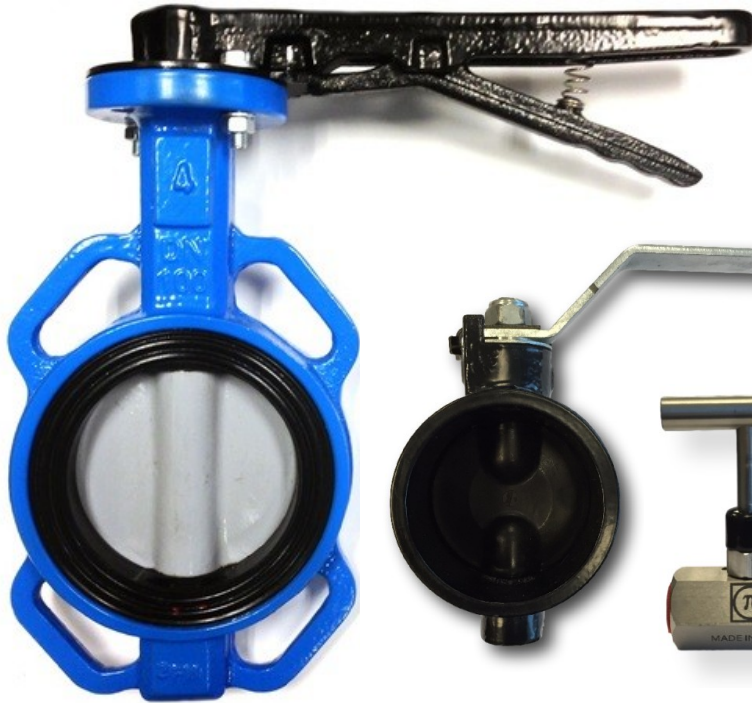


# OIL & GAS



## Hydraulic Fracturing:

- ❖ Valves & Seats
- ❖ Other Components – Plungers, Pony Rods, Suction & Discharge Nuts



## Flow Control Components:

- ❖ Butterfly valves
- ❖ Gate valves
- ❖ Directional valves
- ❖ Ball valves
- ❖ Angle valves
- ❖ Needle valves





# AUTOMOTIVE



## A/C Compressor Components:

- ❖ Pulleys/Rotors
- ❖ Electromagnetic Clutches
- ❖ Hub Assembly
- ❖ Flex Fittings



## Engine Components:

- ❖ Connecting Rods
- ❖ Cylinder Heads/Blocks
- ❖ Crank/Cam Shafts
- ❖ Rocker Arms





# AUTOMOTIVE



## Transmission Components:

- ❖ Gears: Ring/Timing
- ❖ Crown wheel & Pinion
- ❖ Fly wheels
- ❖ Axle Shaft
- ❖ Synchronizer Hubs/Rings/Cones



## Other Components:

- ❖ Exhaust Flanges
- ❖ Seat Brackets



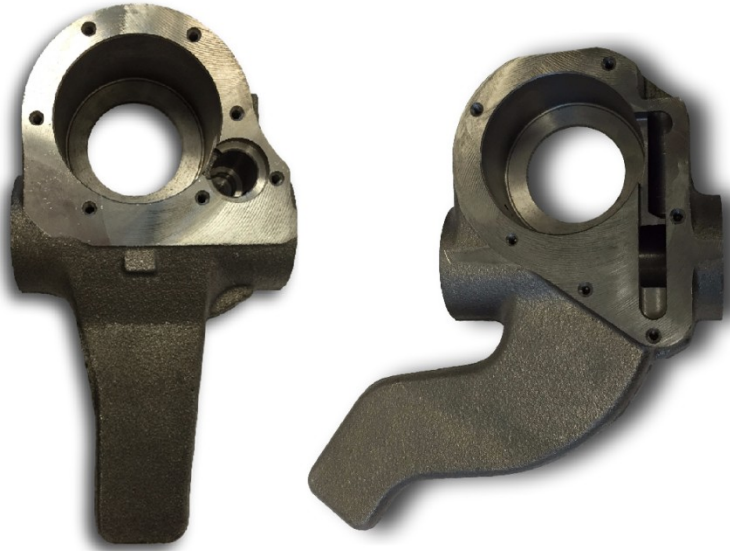
# TRUCKING



## Braking System Components:

❖ Actuator – Threaded Push Rod, Welded Yoke Assembly, Non Pressure Chamber (NPC), Clevis/Yoke

❖ Slack Adjuster – Machined Body Casting/Forging, Worm Gear/Wheel, ABS Clevis, Lift Rod, End Caps





# TRUCKING



## Axle Components:

- ❖ Drive axle: Pinions/Gears
- ❖ Front axle: Hubs, Knuckles, Spindles
- ❖ Dead axle: spiders, Spring seats



## Other Components:

- ❖ Air Dryer Bolt Valve
- ❖ Suspension: Bar Pin, Inner Tube



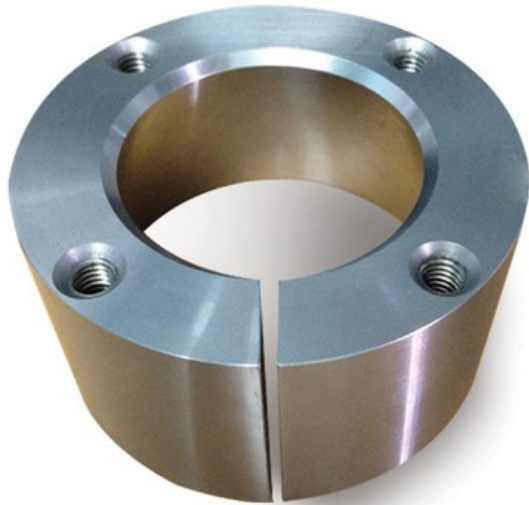


# MINING



## Mining Components:

- ❖ Pivot and Roller Pins
- ❖ Saw-Cut Bushings
- ❖ Bucket Teeth, Side Cutters
- ❖ Large Rolled Rings
- ❖ Undercarriage Links



# GENERAL CAPABILITIES

---

- ❖ Forgings
- ❖ Rolled Rings
- ❖ Castings (Sand & Investment)
- ❖ Stampings & Fabrications
- ❖ Powdered Metal
- ❖ Value-Added Services

---

**WE'RE BIG ON  
PRECISION.**

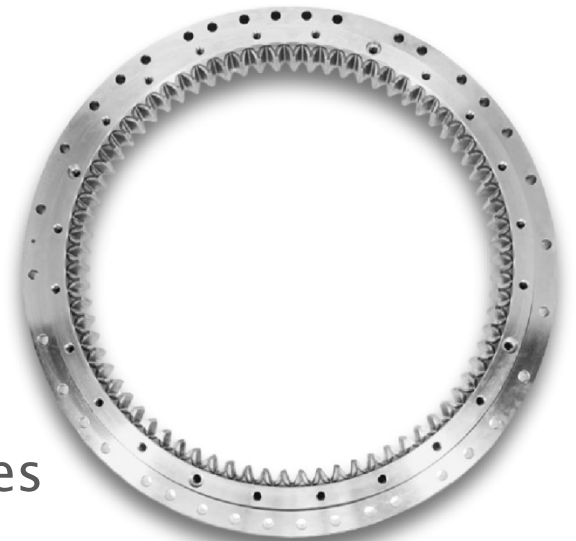
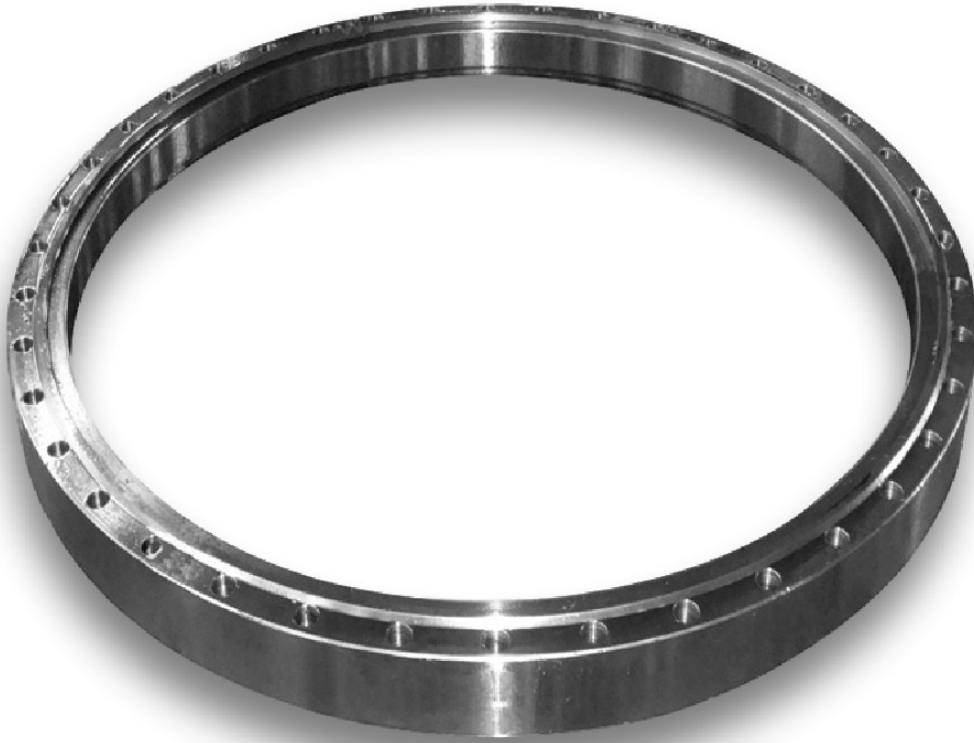


# FORGINGS

- ❖ **Press Range** – 300 Ton to 4000 Ton
  - Component Wgt. – 0.5 Kg to 45 Kg
- ❖ **Rolled Rings** – OD: 0.1 m – 0.5 m
  - Profiling Available
- ❖ **Hammer Range** – 1/2 Ton to 10 Ton
  - Component Wgt. – 1 Kg to 120 Kg
- ❖ **Up-setter Range** – 2” to 6”

# LARGE ROLLED RING CAPABILITY

---



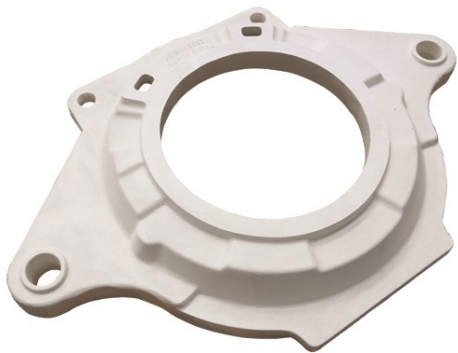
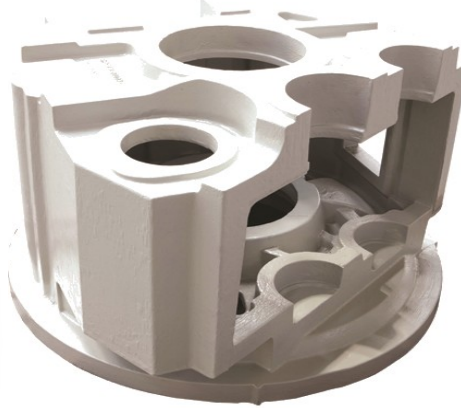
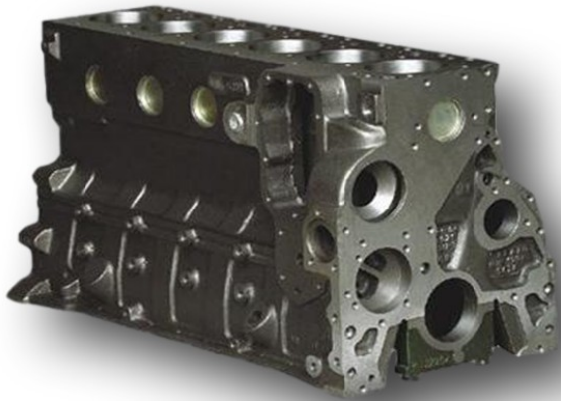
- ❖ **Diameter Range:** 0.5m – 5m
- ❖ **Maximum Weight:** 1000 kg
- ❖ **Material Grades:** Carbon/Alloy Steels
- ❖ **Applications:** Flanges, Gears, Bearing Races



# CASTINGS: SAND & INVESTMENT

- ❖ **Disamatic High Pressure Molding Line**
  - Horizontal and vertical
  - Box Size Range: 700x550x300mm -  
1000x800x350mm
- ❖ **Wax Injection Press - Hydraulic/Auto**
  - Box Size: 600x600x1000mm

# LARGE CASTING CAPABILITY



- ❖ **Weight Range:** 250 kg – 30,000 kg
- ❖ **Material Grades:** SG Iron, Gray Iron, and Steel
- ❖ **Applications:** Cylinder Blocks, Gearbox Housings, Stator Frames, Bearing Housings

# STAMPINGS

- ❖ **Transfer Press** – 1250 Tons
- ❖ **Progressive Press** – 400 to 500 Tons
- ❖ **Pneumatic Press** – 200 to 800 Tons
- ❖ **Hydraulic Press** – 100 to 1000 Tons
- ❖ **Mechanical Press** – 30 to 1000 Tons
- ❖ **Robotic welding** – KUKA Make

# POWDERED METAL (SINTERED)

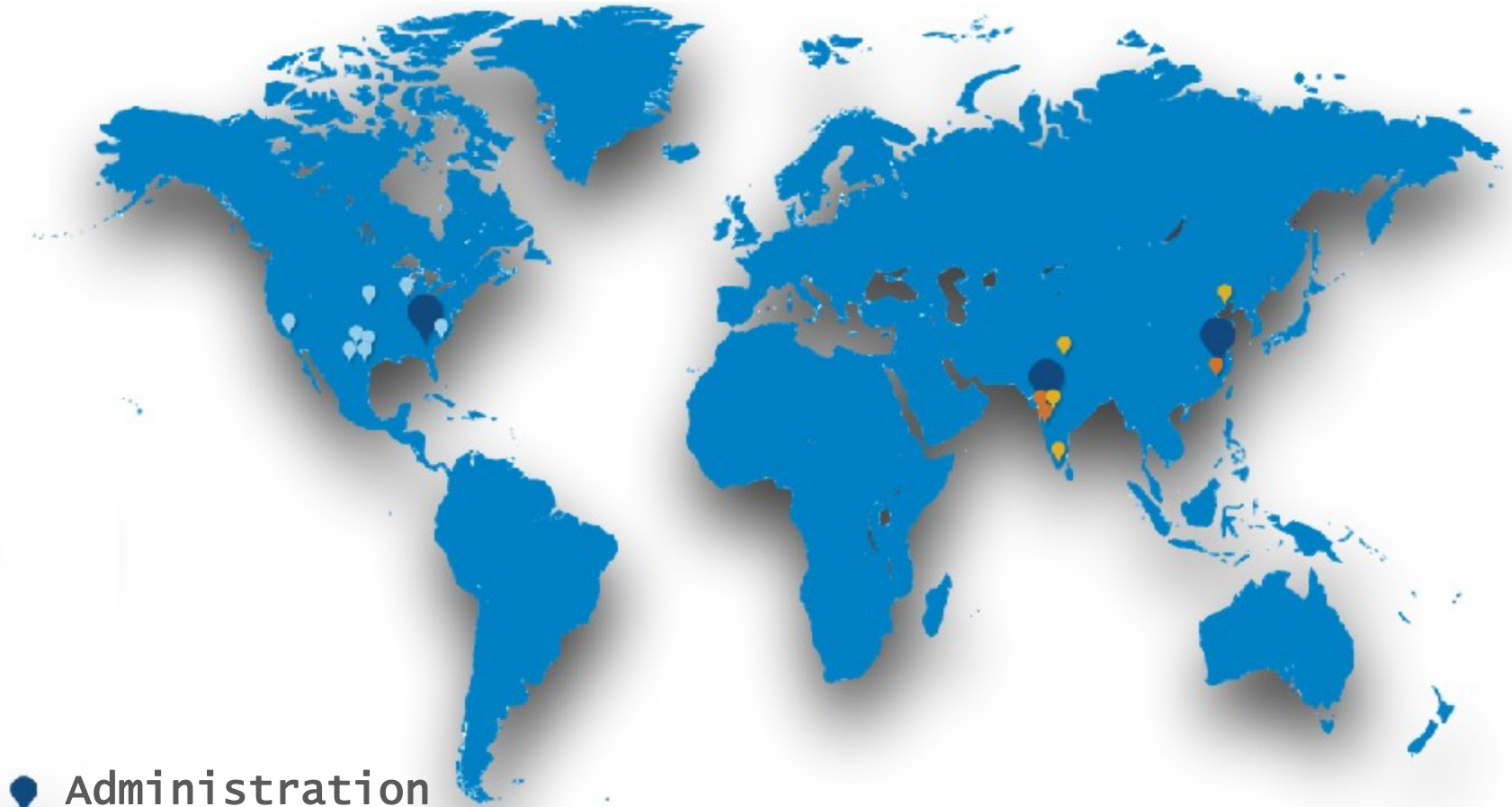
- ❖ **Compacting Press** – 4 to 500 Tons
- ❖ **High Tonnage DORST Press** – 800 Tons  
Multi-Platen (4 Top & 4 Bottom) with  
Total Hydraulic Powder Transfer  
Facility, Intelligent Program Generator
- ❖ **Sizing Press**
- ❖ **Sintering Furnace** – SCADA Control with  
continuous Mesh Belt & Batch Type
- ❖ **Steam Treatment Furnace** – SCADA Control



# VALUE ADDED SERVICES

- ❖ **Precision Machining:** CNC/VMC/HMC
- ❖ **Heat Treatment Services**
  - Quenching and Tempering
  - Induction Hardening
  - Case Carburizing
- ❖ **Surface Treatment**
  - Powder Coating
  - EDP Coating
  - Zinc Plating
- ❖ **VA/VE Design**

# GLOBAL FOOTPRINT



- Administration
- Distribution
- Owned/Captive Manufacturing
- Contract Manufacturing

# ISO 9001:2008 CERTIFICATE

CERTIFICATE



Management system as per  
**ISO 9001 : 2008**

In accordance with TÜV NORD CERT procedures, it is hereby certified that

**INDUSTRIAL PRODUCTS INTERNATIONAL INC.**  
3/3, Venus Society, Old Mumbai-Pune Road,  
Phugewadi, Pune – 411 012, Maharashtra,  
India

applies a management system in line with the above standard for the following scope

**Strategic Sourcing & Supplies of Automotive & Engineering  
Components With Value Added Engineering Services**

Certificate Registration No. **44 100 14390006**  
Audit Report No. **2.6-6307/2013**

Valid until **05.01.2017**

*S.K. Kulkarni*

Certification Body  
at TÜV NORD CERT GmbH

Issue **06.01.2014**  
Place : **Mumbai**

This certification was conducted in accordance with the TÜV NORD CERT auditing and certification procedures and is subject to regular surveillance audits.

TÜV NORD CERT GmbH

Langemarckstrasse 20

45141 Essen

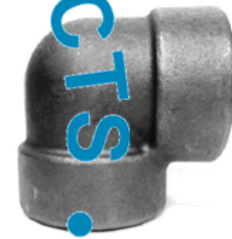
[www.tuev-nord-cert.com](http://www.tuev-nord-cert.com)

## Plant Certifications:

- ❖ TS 16949:2009
- ❖ ABS
- ❖ API-Q1
- ❖ PED 97/23/EC
- ❖ OHSAS 18001:2007
- ❖ AD 2000 Merkblatt w0
- ❖ EMS 14001:2004



TGA-ZM-07-06-00



INDUSTRIAL PRODUCTS  
INTERNATIONAL

